

**GENERAL NOTES:**

1. SEE SHEET A5.01, A5.02 AND A5.03 FOR SITE DETAILS.
2. SEE CIVIL AND STRUCTURAL DRAWINGS FOR ADDITIONAL DETAIL INFORMATION
3. COORDINATE WITH CIVIL DRAWINGS TO LOCATE BUILDING ON SITE BY DIMENSION
4. SEE GEOTECHNICAL REPORT FOR EXCAVATION, SUBGRADE AND DRAINAGE COURSE REQUIREMENTS.

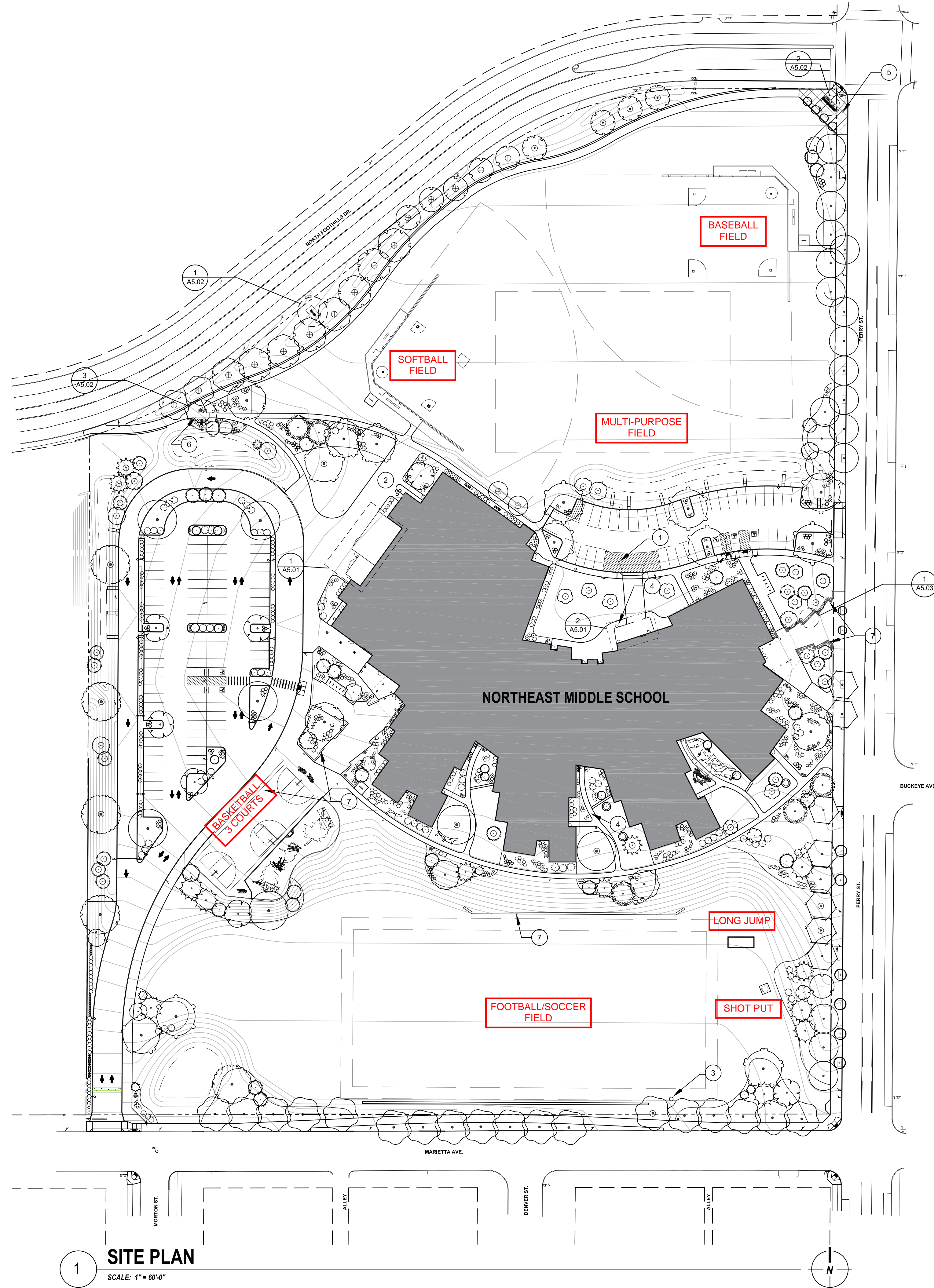
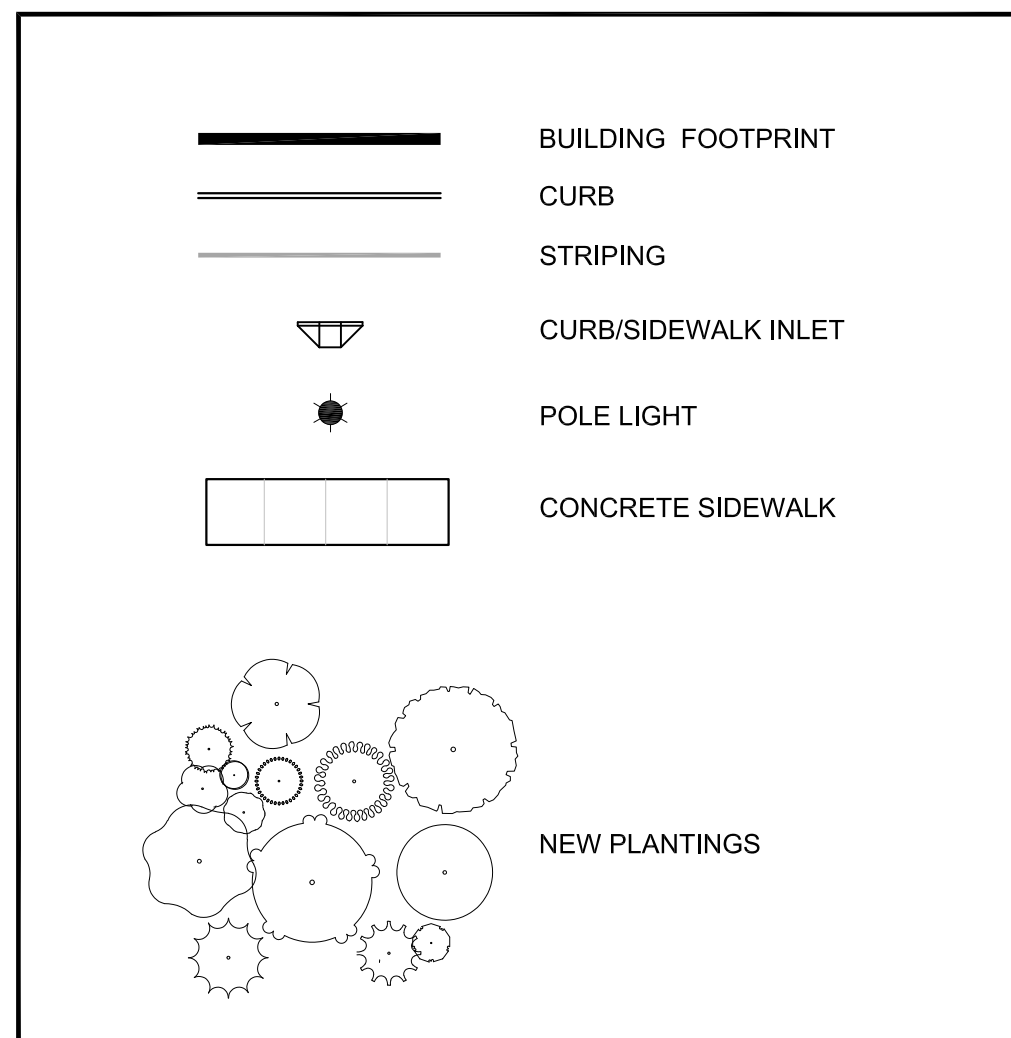
**KEY NOTES:**

- 1 FIRE TRUCK TURN-AROUND
- 2 FIRE TRUCK/SERVICE VEHICLE ACCESS
- 3 CITY AQUIFER MONITORING WELL - SEE CIVIL
- 4 EGRESS GATE WITH PANIC HARDWARE FOR EXITING
- 5 NE PLAZA, SEE LANDSCAPE
- 6 NW GATEWAY SIGN
- 7 SEAT WALL - SEE LANDSCAPE AND CIVIL DRAWINGS

**PARKING CALCULATIONS**

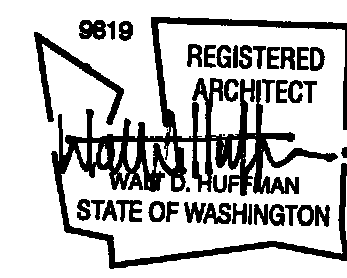
MINIMUM PARKING: 1 STALL PER CLASSROOM (50 TEACHING SPACES)  
 MAXIMUM PARKING: 2.5 STALLS PER CLASSROOM (50 x 2.5 = 125)

**LEGEND**



**1 SITE PLAN**  
 SCALE: 1" = 60'-0"

CONFORMED SET



**SITE PLAN**  
**NORTHEAST MIDDLE SCHOOL**  
 2701 N. PERRY ST.  
 SPOKANE, WA 99207



File No:	20.01
Date:	5/20/21
Drawn by:	Author
Checked by:	Checker
Scale:	1"=60'-0"
Sheet Title:	SITE PLAN